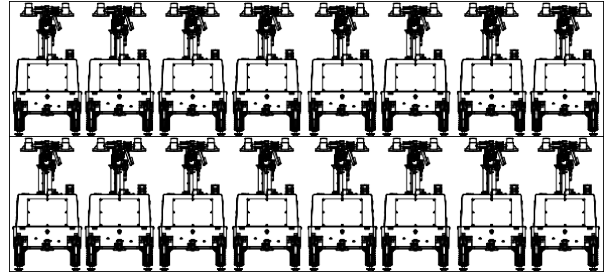


MLT4YD-1400LD-2

Powered by Yanmar






16U. / 40 'HC. CONTAINER



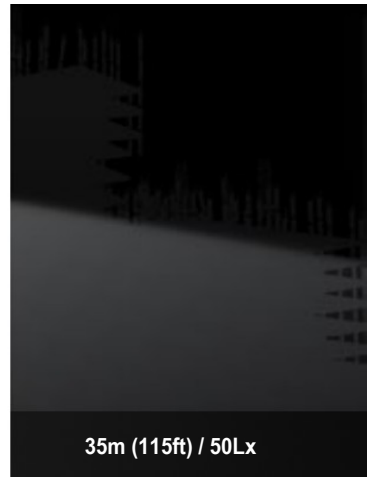
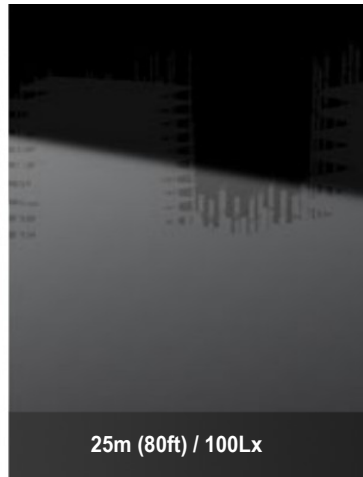
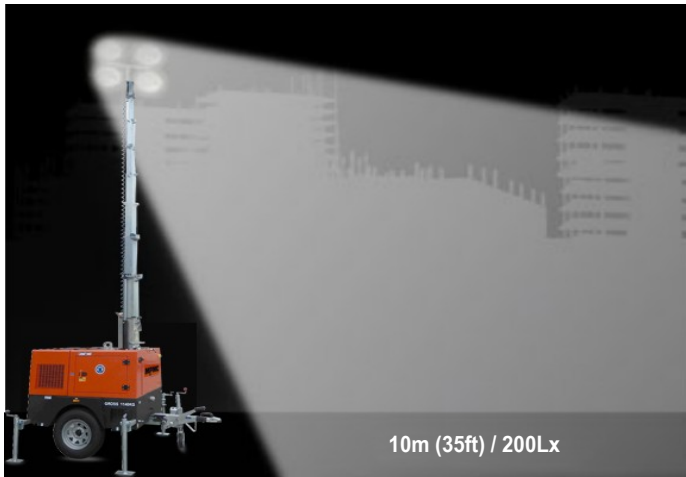
Efficient hydraulic lifting system with rapid telescopic deployment

Mast rotation
355°

✓ Highlights

-  Less fuel consumption. Longer run-time
-  Simple control system
-  High efficiency
-  Sturdy and durable
-  Max height 7.2m





Lighting Tower Technical Data

Power Package Rated Power	6KW
Number & Power of Lamp	4×350W
Rated Frequency/ Speed	60Hz /3600 rpm
Rated Voltage	AC 240V
Noise	65dB(A) @7M
Mast-Maximum Height	7.2M
Mast Lifting & Extension	Manual Operation
Fuel level gauge	Electronic
Tower leg type	Manual
Trailer Load bearing	672KG
Trailer type	Off road type
AUX. Power output	16A/3P Socket
Rotation angle range of light	355°
Wind resistance grade	65km/h
Recommended use environment	Level ground

Lamp

Number×Power	4×350W
Lamp type	LED
Protection Glass	IP67
Luminous Efficiency	150Lm/W
Color Temperature	5000 K
Voltage	AC 240V
Lamp service life	50000hrs

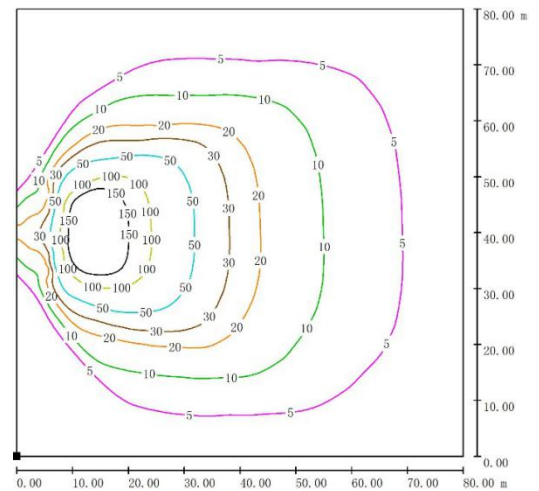
Control System

Controller Model	MALC404
------------------	---------

Dimension and Weight

Max Overall Dimension (L×W×H)	2990*2310*7200 mm
Container loading Dimension (L×W×H)	1480*1100*2498 mm
Tank Capacity / Running Hr.	100 L / 73 hrs.
Weight	672 kg
The loading capacity(40'HC)	16 Sets

Note: Specifications and illustrations are subject to revision without notice.



Environmental Conditions

- Ambient temperature: +5°C~+40°C
 - Altitude: ≤1000m
- Note:** Please contact us if operating environmental conditions required do not go with the guidance.

Factory Inspection

- Complete design and quality inspection
- 30 mins full load test
- Function testing
- Protection testing

Painting Process

- MPMC has the most advanced automatic spraying / powder coating production line, and is equipped with various sandblasting equipment to ensure higher quality.
- Canopy painting: HenKel pretreatment process and world famous brand AkzoNobel powder.
- Base Frame painting: Sandblasting process and AkzoNobel powder (Hempel paint is optional).



Engine Specifications

Engine Model	2TNV70-HGE
Manufacturer	Yanmar
Emission	/
Number of Cylinders	2
Cycle	4 Stroke
Aspiration	Naturally
Prime Power / Speed (Gross)	10.0KW / 3600RPM
Lube-oil Capability	2.2 L
Fuel consumption	≤318 g/kWh
Starter motor/ Alternator	12V 1.0kW

- Heavy duty diesel engine
- Anti-vibration mount
- Replaceable fuel filter, oil filter & air filter
- Cooling radiator and fan
- Starter battery (with lead acid) including rack and cables
- Flexible fuel connection hoses
- Exhaust silencer and bellows
- Operation manuals and circuit diagram document

Alternator Specifications

Alternator Model	KT06-2
Manufacturer	Dingol
Rated Output Power	6KW
Alternator Type	Brushless
Rated Voltage	AC 240V
Rated Speed	3600 RPM
IP Protection	IP23
Insulation Grade	H

OPTIONS

<input type="checkbox"/> Jacket water heater	<input type="checkbox"/> Manual pump
<input type="checkbox"/> Lub-oil heater	<input type="checkbox"/> Smartgen controller
<input type="checkbox"/> ABB/Schneider MCB	<input type="checkbox"/> Sockets
<input type="checkbox"/> Battery charger	<input type="checkbox"/> Larger fuel tank



MPMC POWERTECH CORP.
sales@mpmc-china.com | www.mpmc-china.com

Photographs are for illustrative purposes only and may not reflect final configuration.

Follow us

- <https://www.facebook.com/mpmcgroup>
- <https://www.linkedin.com/company/mpmcpowertech/>
- <https://www.youtube.com/user/MPMCGenerator>

All information in this document is substantially correct at time of printing and may be altered subsequently. Final weight and dimensions will depend on completed specification.